



## Varnish Protection Package

Customer Name: EXAMPLE REPORT

**RATING: NORMAL**

UNIT ID: 1D NCP UPPER

**DELTA ENERGY: 12.683**

Reservoir Description: MOTOR BEARING

Lab Number: 123456

Sample Date: 04/25/2011

Oil Type: CHEVRON GST 46

### Interpretation of Data:

Normal Range: This means that there are low levels of the precursors that lead to soft contaminants (varnish).



Figure 1: Membrane Patch Colorimetry - Sample Patch.

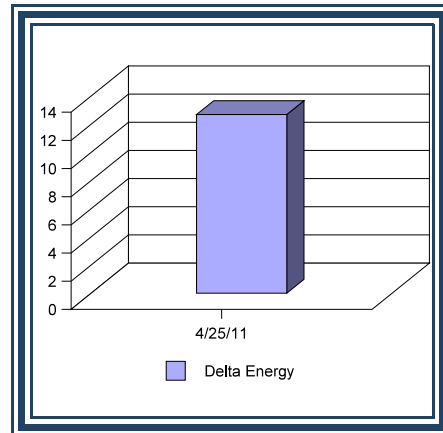


Figure 2: Historical Delta Energy

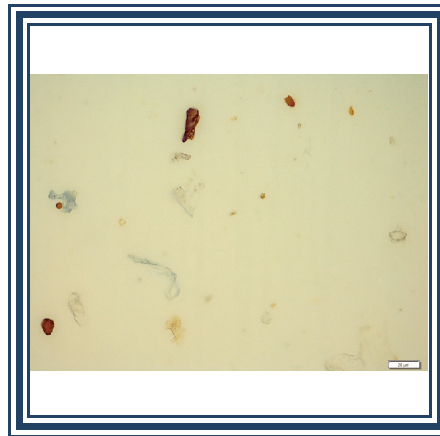


Figure 3: Membrane Patch (Magnification 500X).